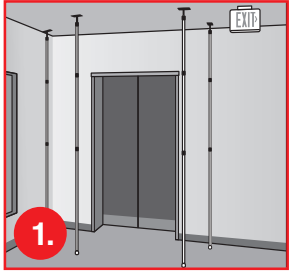
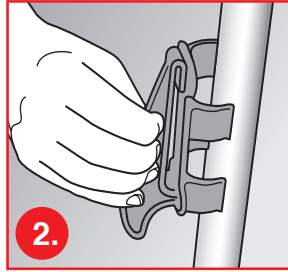


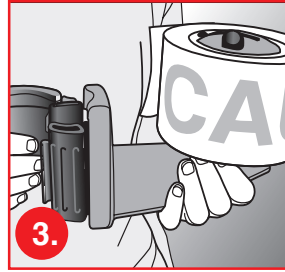
Setup instructions: ZipWall® Caution Tape Reel



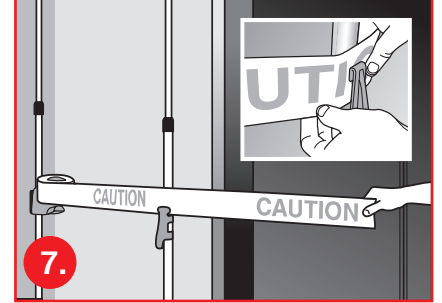
1.



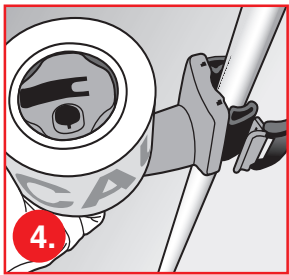
2.



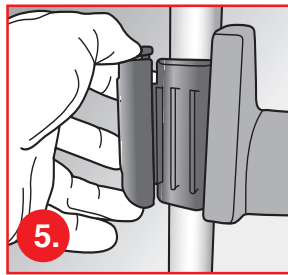
3.



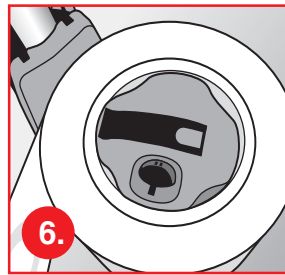
7.



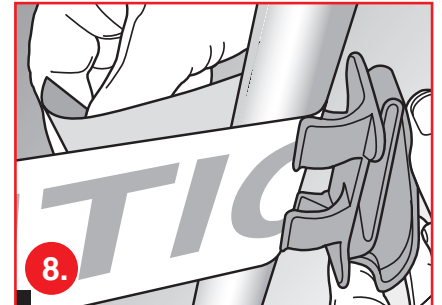
4.



5.



6.



8.

1. Set-up your ZipWall® poles around the caution area. Place one at each corner or change in direction, up to twenty feet apart.

2. Attach a Tape Clip to each pole at your desired height, a bag of six are included. You may leave clips on the poles during storage.

3. Before attaching the Caution Tape Reel™, slide the tape roll onto the reel with wording right side up. Attach the reel so that the "Caution" text is bold side out and right side up.

4. Be sure the clamp is open and ready to attach to the pole.

5. Place the clamp around the pole and position it over the appropriate catch. Push down the grey latch to clasp the clamp. With the correct catch, the latch will close without excessive force. Fit should be snug, not forced.

6. Be sure the LockTab on the top of the Reel is in the "unlocked" position. Pressing the thumb release. Place the Tight-Seal Rail into Side-Seal Clamp's rail catch and release thumb pressure. To center the Side-Seal Clamp on the rail, place at the Tight-Seal Rail label.

7. Walk with the tape past all the poles, threading it through each Tape Clip as you pass.

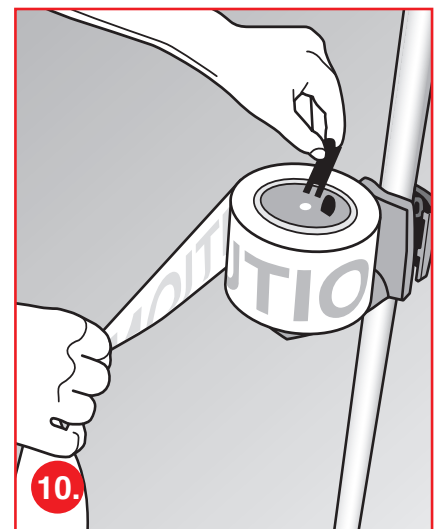
8. At the last pole, snap the Tape Clip over tape to hold it in place.

9. Tighten the tape by turning the reel then, slide the Lock Tab to the locked position. This will hold the caution tape taut.

10. When the job is finished, remove the clip from the last pole to unfasten the tape. Put the Lock Tab in the unlocked position. Pull the handle from the top of the Reel and use it to rewind tape for the next job. For best results, guide the tape as you rewind.



9.



10.

ZIPWALL
The **zero dust** solution

Email: info@zipwall.com.au
Or visit: zipwall.com.au